

solarSTEP light[®] GM

Leading aerodynamic mounting system for photovoltaic modules on flat roofs

solarSTEP light[®] is the modular mounting system for photovoltaic systems on flat roofs for framed modules.

No necessity for roof permeations or for additional weights*.

* wind zone 1 up to 18 m building height / wind zone 2 up to 10 m building height



Economic value

- easy, fast and simple installation and disassembly at all times
- no roof permeations; clear separation of the crafts “roofing/sealing” and “mounting of the photovoltaic-system”
- very good ventilation of the photovoltaic system; guaranties maximum earnings
- simple maintenance

Quality

- all parts made out of the following non-corrosive materials: aluminium, inox, zinc-coated weather-proof spoilers (optional with colour-coating)
- extended life-cycle due to very high resistance against corrosion
- static compliance with all regulations of DIN 1055-4
- certified by TÜV Rheinland

Technical highlights

- minimal additional weight of the solarSTEP photovoltaic system of approximately 10 kg/m² roof area
- efficient and easy assembly with few components and parts
- proven conformity of the integrated solarSTEP separating layer with all leading flat roof membranes; industry certificates available
- professional solarSTEP cable attachment system
- optional solarSTEP lightning protection concept for low-cost integration into the lightning protection for the building
- free water-flow over the entire flat roof according to the regulations of DIN 1986-100

Service

- complete in-house technical planning and execution by the solarSTEP group
- workshops for solarSTEP light-CAD-planners (including solarSTEP library for AutoCAD)
- training for project managers and staff as certified solarSTEP light system builder



Standard parameters

- roof pitch: up to 5 degrees
- roof parapet: at least 25 cm in all directions (exceptions with project evaluation possible)
- roof types: all types of flat roofs with little free loads (e.g. roofs with membranes or with bituminous sealing, green covering for roofs, roof gardens, roofs with ballast chipping)
- distance to the roof edge: at least 2,0 m from the edge of the module to the outside edge of the roof
- wind zones: I and II (wind zones III and IV possible with project evaluation)
- building height: max. 18 m (in most cases heights up to 40 m possible along with project evaluation)

solarSTEP light® GM technical data

system type	aerodynamic system without roof permutations	
additional load	appr. 10 kg per m ² roof area	
module types	framed modules	
module inclination	standard 15° or 20° (other angles between 10° and 30° degrees possible)	
module alignment	horizontal	
module measurements (other sizes possible on request)	width[mm]	height[mm]
	1350 - 1990	980 - 995
	1350 - 1650	800 - 830
materials	aluminium, inox, zinc coated steel (colour coating optional)	

static certification

static certification by an official inspection engineer of the Chamber of Engineers (Baden-Württemberg)

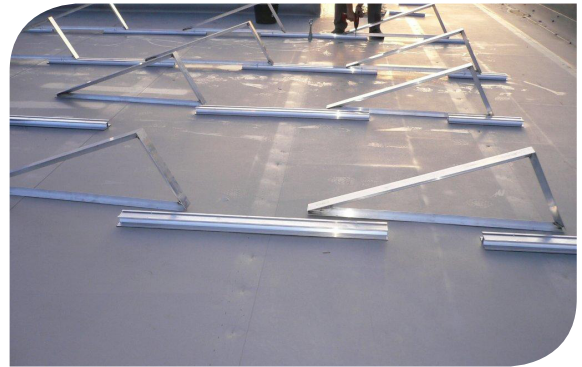
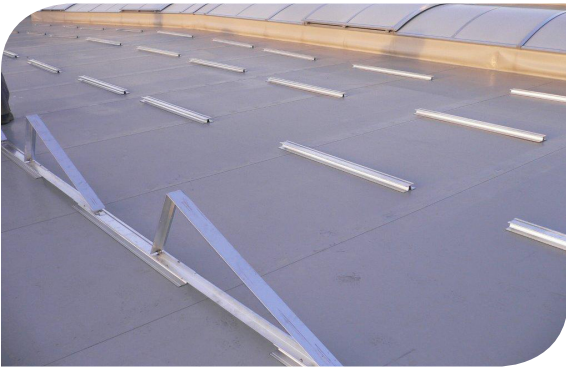
TÜV-certification

solarSTEP light GM is certified by TÜV Rheinland.



- Qualified PV Mounting System
- Periodic inspection





www.solarstep.eu

